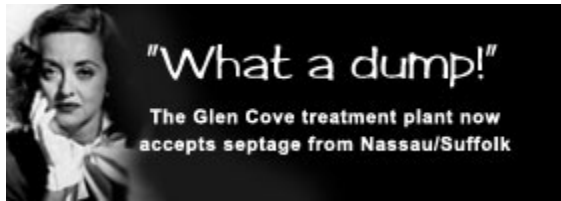


Glen Cove Accepting "Type A" Septage From Both Nassau & Suffolk Counties



Severn-Trent Environmental Services has announced that the Glen Cove Wastewater Treatment Plant is now accepting "Type-A" septage from both Nassau and Suffolk counties. Please note that among the stringent regulations in effect at the plant, there is a strict ban on grease. Detailed manifests that track the loads are required and all permits and other necessary paperwork must accompany the trucks to the discharge site. [Click here to download regs, permit applications and other information.](#)